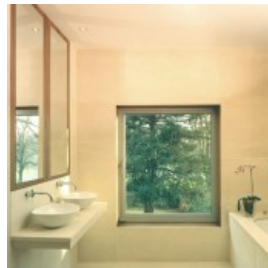
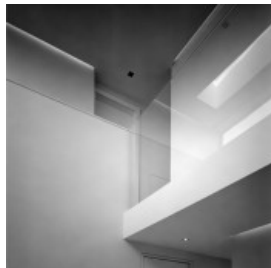


Golders Park Close



A complete refurbishment programme, including the formation of a basement, for a modernist 60s house. The dramatic double height entrance leads into a fluid open plan ground floor space. An extended kitchen flows through to dining and on to living with views to the front and rear. Spaces are separated with subtle changes in levels. Neutral natural materials were chosen such as Portland Stone along with a wide board walnut living room flooring.